

# kristine neri



CONDOMINIUMS

# kristine neri

"What I love most is how interior design can impact people's lives... elevating our human experience through transformation of space."

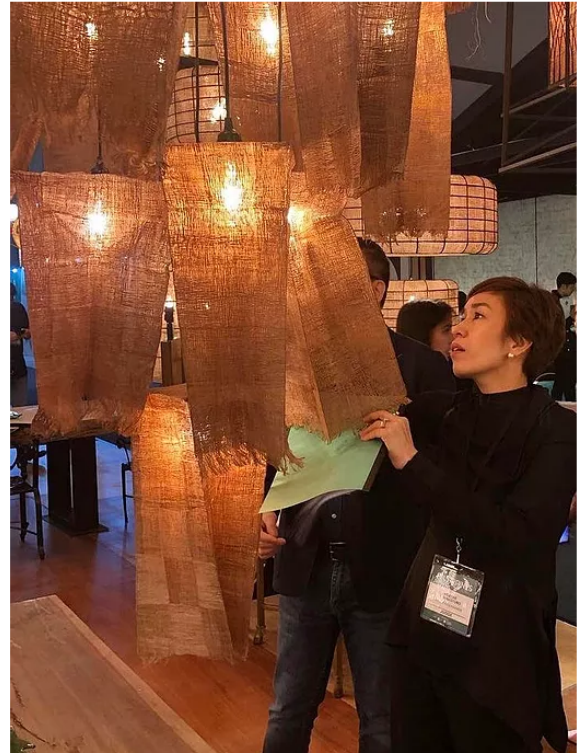
## Why She Designs

Founder & Principal Designer IDr. Kristine Neri feels blessed to spend her days doing what she loves... designing for folks who love bespoke + useful interiors and furniture.

She believes that our environments have the power to uplift the senses + unwind the mind... to ease us into heightened states of vitality + bliss.

She leads both her KRISTINE NERI interior design studio and the URBAN ABODE furniture workshop & retail store as a joint house of style... with a mission to transform spaces and amplify beauty, wellness, potency, leisure & impact.

While having built an expansive portfolio, she relishes each new client collaboration + making every page special in a shared design story.



## How She Gets It Done

For over 20 years, Kristine has built a track record of successful design projects + furniture production, collecting practical insights through experience. She started young and was determined to follow her passion long before the interior design industry became accepted and celebrated as it is today. A seasoned designer who is always **evolving**, her goal as ever is to elevate each space with a **fresh** fusion of styles.

Artistic passion + professional rigor enabled her over the years to develop a well-balanced knowledge of design, materials, budgets, contractors, suppliers + project management that feeds her understanding of each client's vision, to see opportunities to meet or exceed expectations, and to set realistic, viable plans to make it happen.

Kristine leads + guides with empathy, skill and joy for her craft.

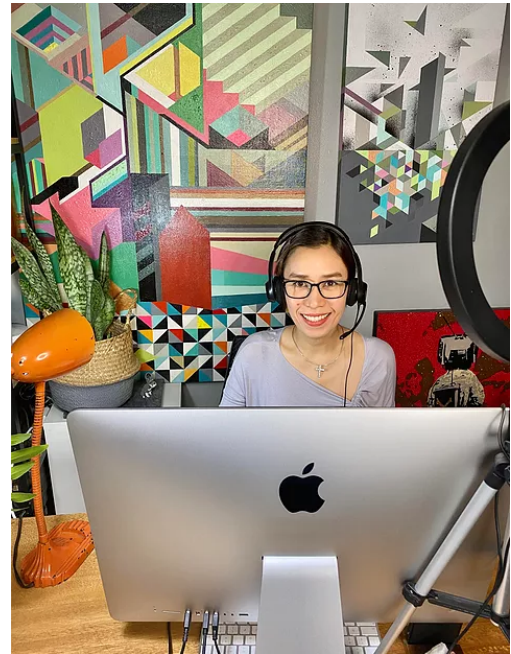


## What She's Thankful For

It's Kristine's honor to have been trusted by her clients over the years and invited to share her knowledge + joy of all things interior design with university students. Her team is a blessing and she considers it a privilege to be able to give back to the design community by offering student internships.

She is also grateful for features in magazines, television + online shows, articles and webcasts for her achievements in high-end residential and commercial spaces.

A special thanks to the Philippine International Furniture Show (PIFS) for selecting Kristine as a judge for the PIFS Design Awards 2019.



## Where She Learned

Kristine Neri is a licensed Interior Designer with a Bachelors in Interior Design from the University of the Philippines Diliman. She began her career as a consultant at an architectural firm, then served as a Senior Interior Designer for a local enterprise while simultaneously designing freelance projects to hone her craft. For the next eight years, Kristine teamed up with a colleague to launch an interior design studio + retail furniture stores in SM Megamall and Makati.

This journey of growth led to her next venture as a solo entrepreneur which gave rise to her KRISTINE NERI design studio, and URBAN ABODE with husband Michael Magturo.

Today, Kristine leads her team's quest to make bespoke interior designs + furniture for spaces that nourish fresh, inspired living.

# kristine neri

Interior Design Studio



Kristine's contemporary modern interior interpretations are **fresh yet warmly familiar**. Weaving local sensibilities with global trends past and present, each of her client's goals & dreams becomes her **personal** passion project.

Her designs are enriched by a purpose-driven belief that interior design is her calling + her over 20 years of experience + a thirst for **constant learning and innovation**.

Kristine's zeal to create beautiful, viscerally impactful interiors is **balanced** by her practical, empirical common sense and a successful track record managing projects, contractors + suppliers, guiding her clients, and getting the job done joyfully to generate **sublime spaces**.

---

## Alchemy of Design

One of Kristine's strengths is weaving the design DNA of adored styles into fresh expressions... infusing nostalgic nuance into a new era.

Contemporary Luxe

Art Deco

French Country

Rustic

Coastal

Modern

Mid-Century Modern

Scandinavian

Contemporary

Transitional

Tropical Modern

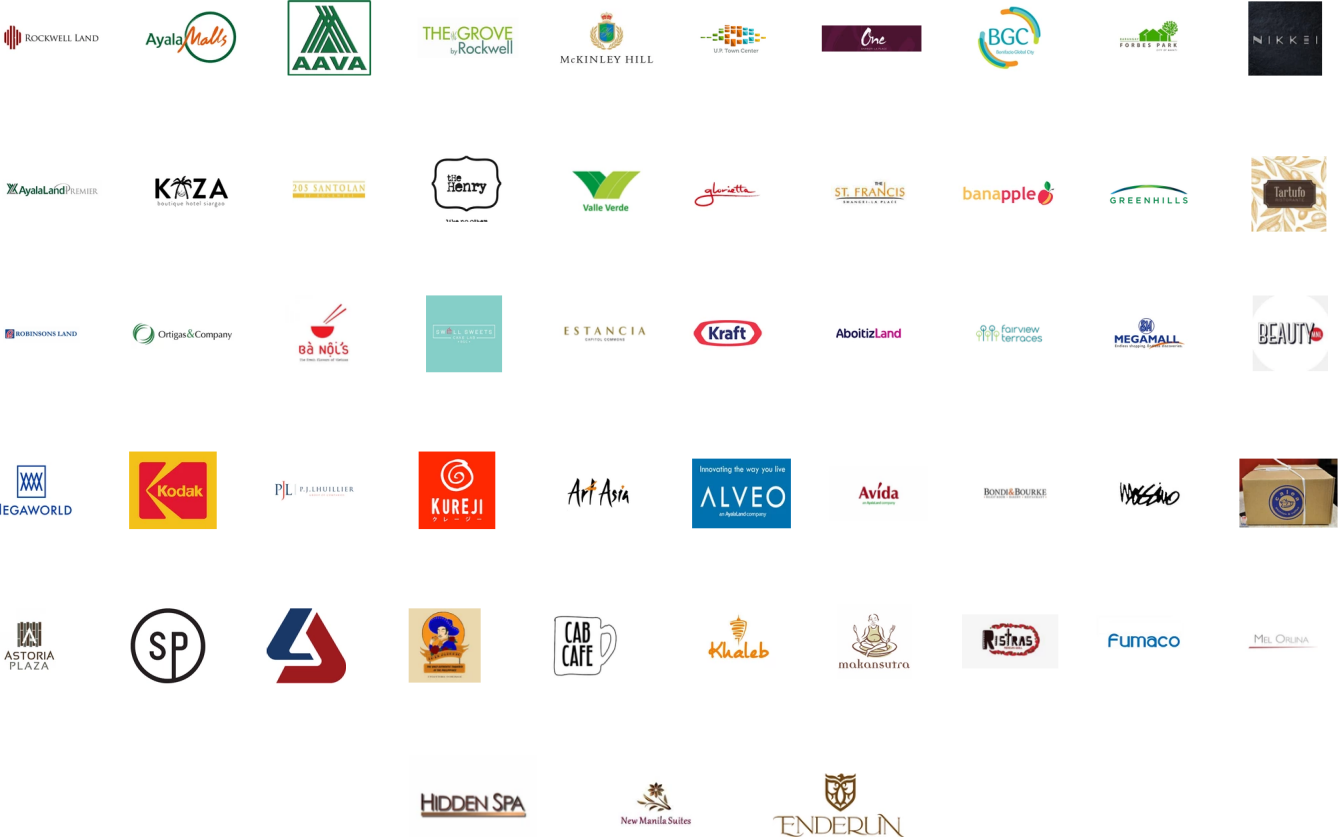
New York Loft

Modern Farmhouse

Warm Industrial

London Flat

## Some of our Clients + Project Locations





URBAN ABODE





















































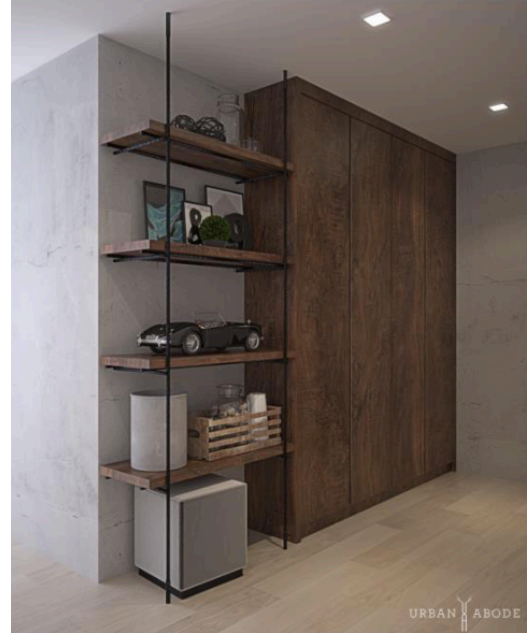






























URBAN ABODE



URBAN ABODE



























